

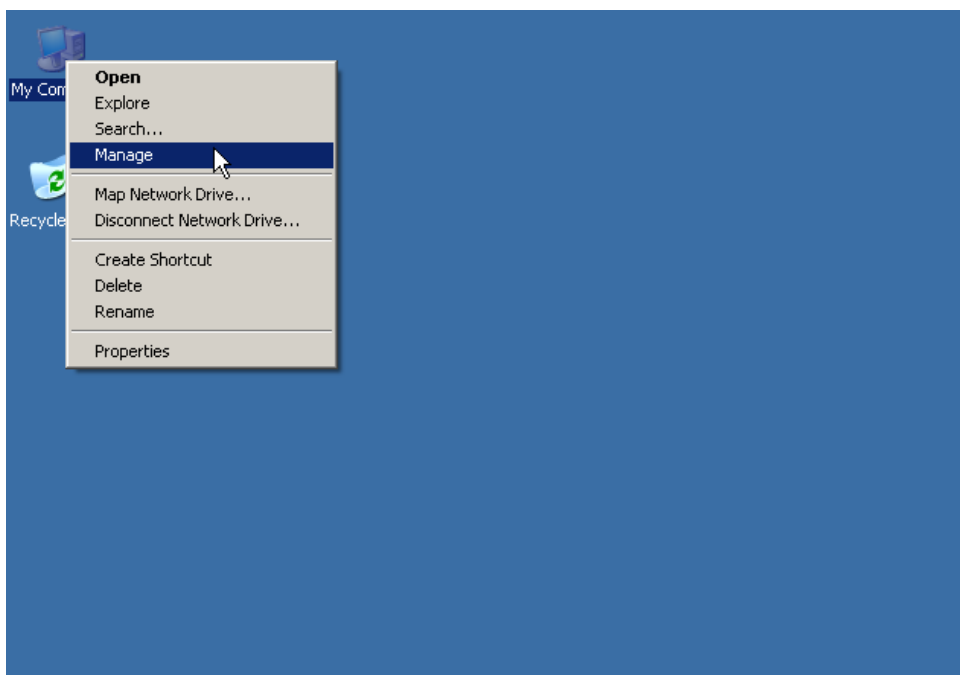
# How to Install the Driver of IFD6503

**Step1 Install the V2.02 NetView Builder software.**

**Step2 Insert IFD6503 to the USB interface of PC.**

Afterwards, follow the operations below for installation of the driver.

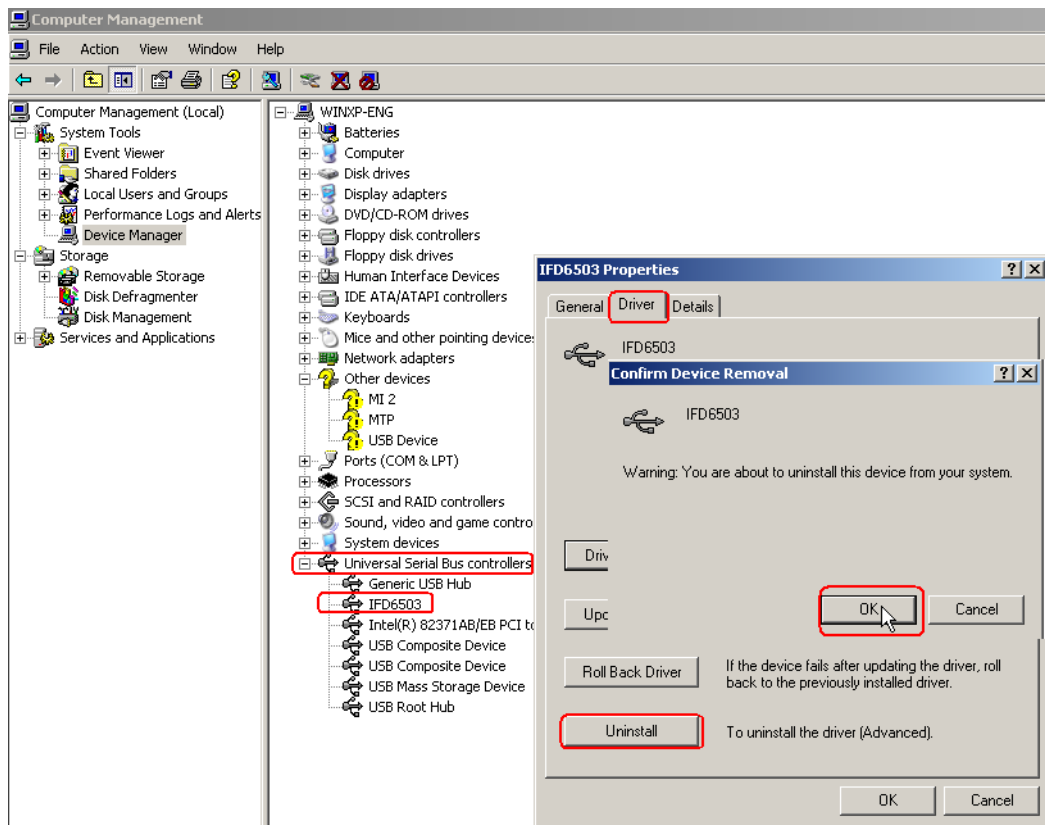
1. Right-click on “My Computer” icon on the desktop and then click on “Manage” on the pull-down menu as below.



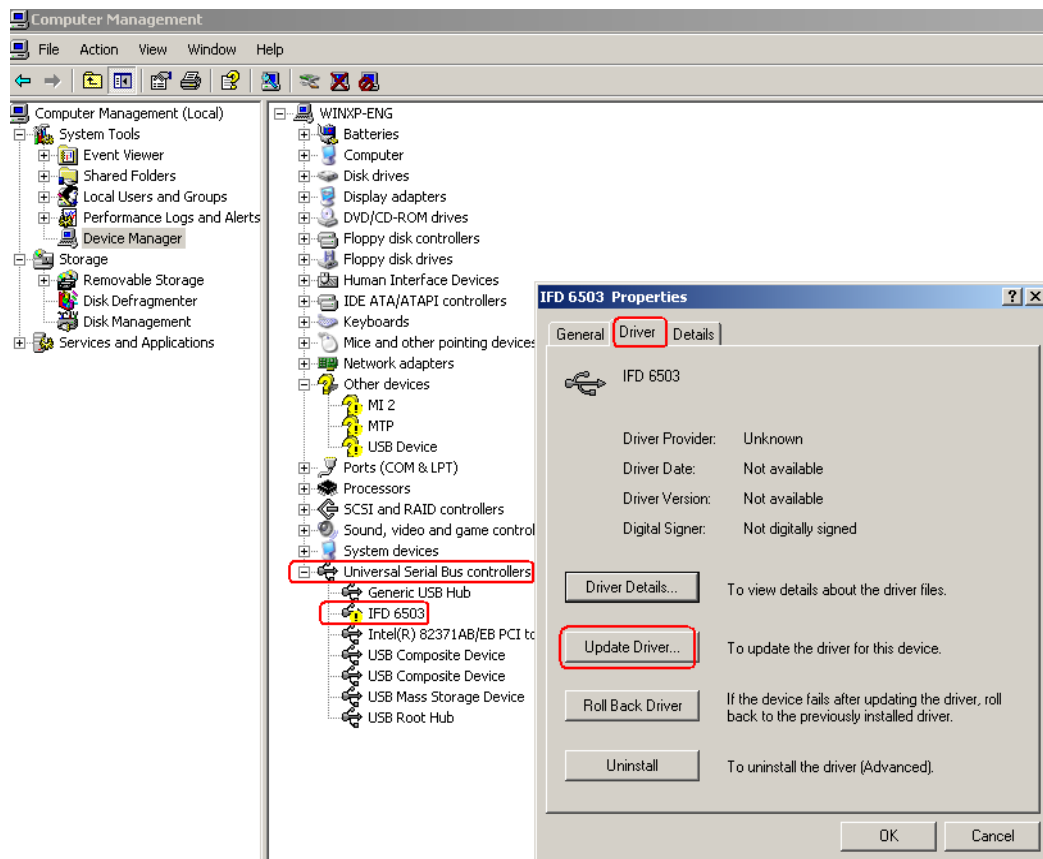
2. The following “Computer Management” window will appear promptly, where you should click on “Device Manager” on left-side of the window.

If your PC has not installed the old driver program of IFD6503, you can skip step 3 to continue the installation of the driver program of IFD6503.

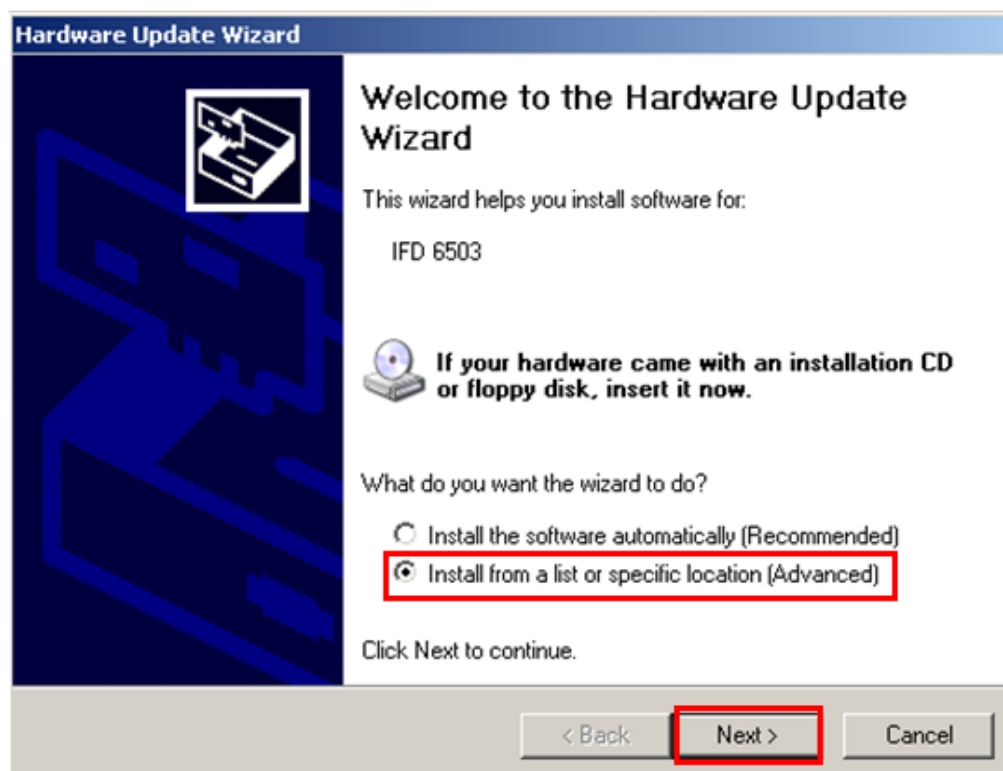
If your PC has already installed the old driver program of IFD6503, you should uninstall the old driver program first by double clicking on “IFD6503” under “Universal Serial Bus controllers” on the right side of the following window and then clicking on “Uninstall” button on the window which pops up as the figure shows below.



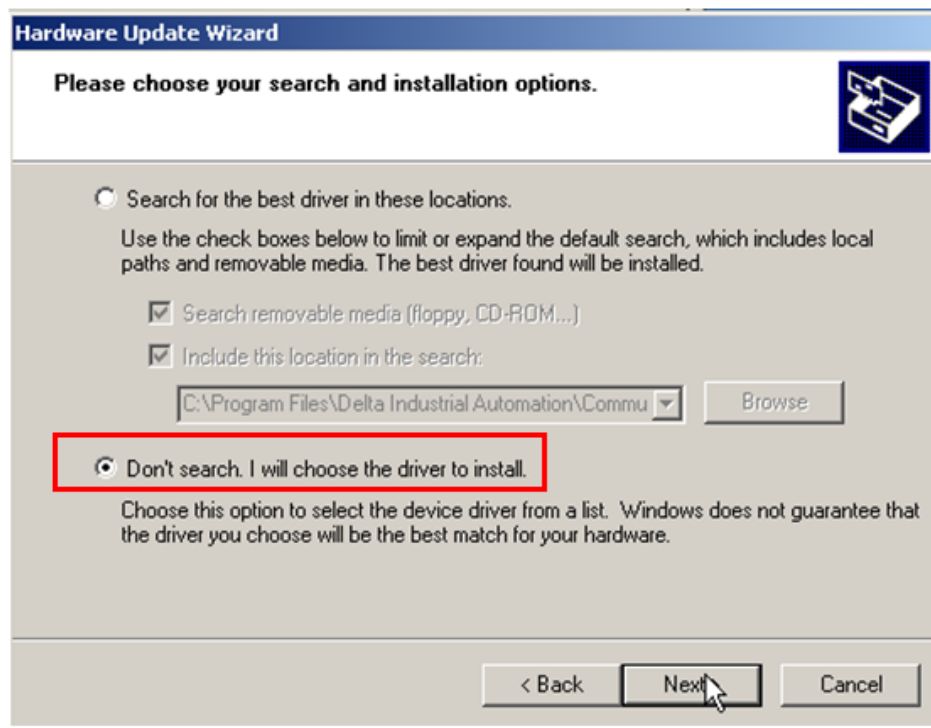
3. After uninstalling the old driver program, please re-insert IFD6503 to the USB interface of PC.
4. Double click on "IFD6503" under "Universal Serial Bus Controllers" and then click on "Update Driver..." button on the window which pops up to continue the installation of the new driver program of IFD6503 as follows.



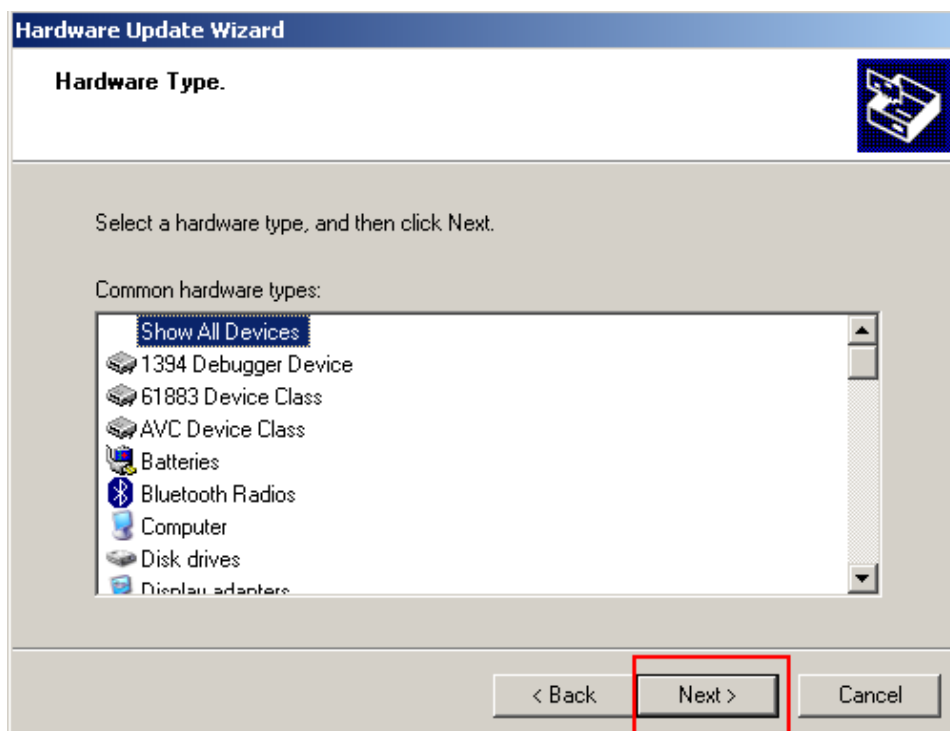
5. By clicking on “Update Driver...” button, the following interface appears, where you should select the item “Install from a list or specific location (Advanced)” and then click on “Next” button.



6. The following interface comes out immediately, where you should select the item marked in red box below and then click on “Next” button.

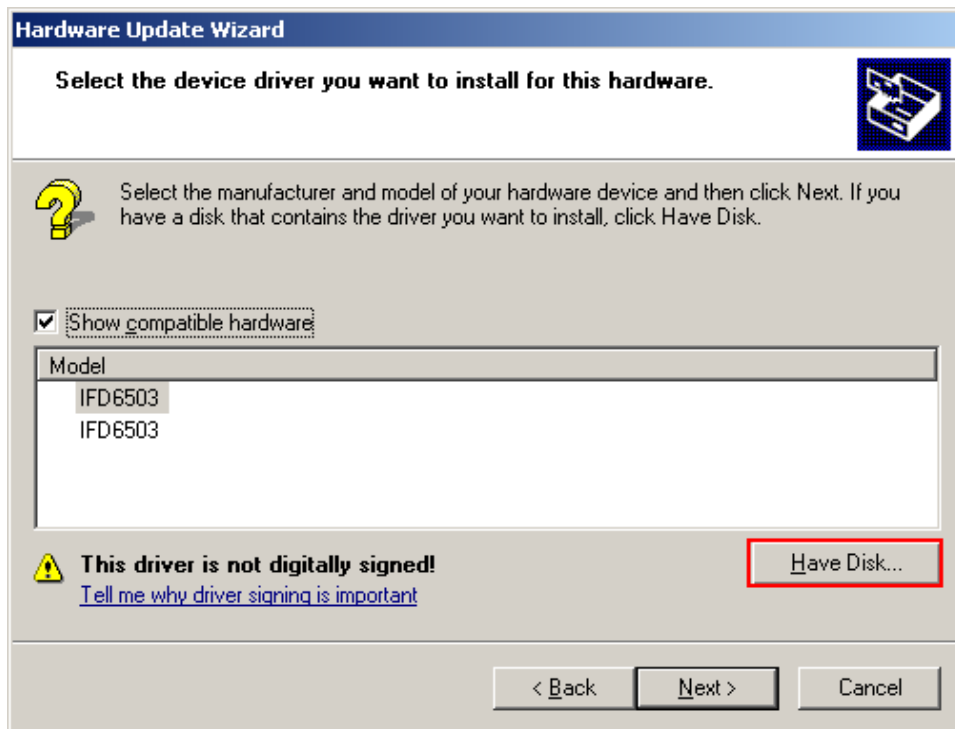


And then following window pops up.



Click on “Next” button and then another window pops up as follows, where you should click on “Have Disk...” button as shown in red box below to prepare for selection of the

path to the driver program.



Afterwards, the “Install From Disk” dialogue box pops up, where click on “Browse...” to select the path to the driver program.

Note:

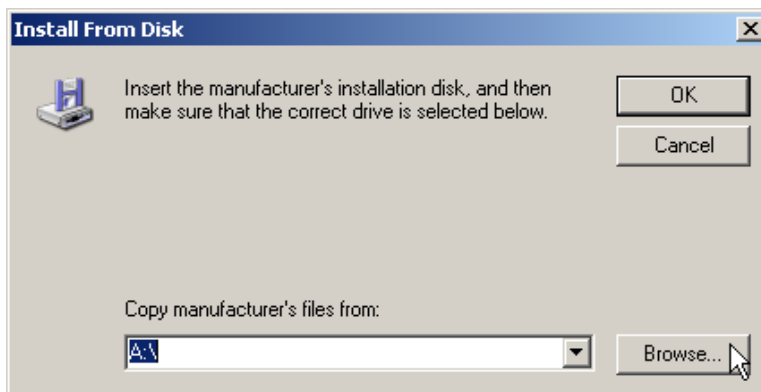
The default path to the driver program of IFD6503:

C:\Program Files\Delta Industrial Automation\Communication\NetView Builder 2.02\driver\

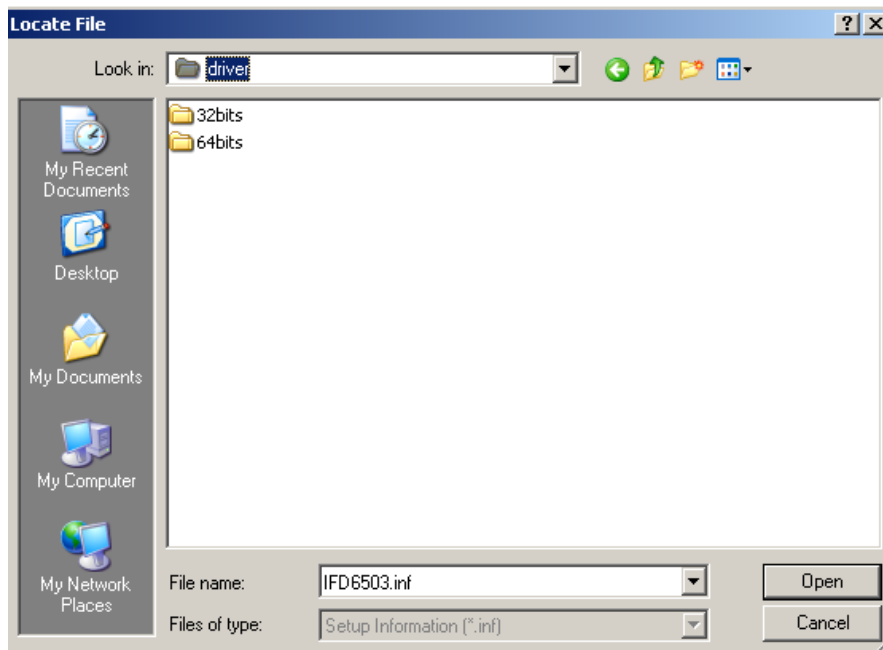
The default path for installation of NetView Builder:

C:\Program Files\Delta Industrial Automation\Communication\NetView Builder 2.02

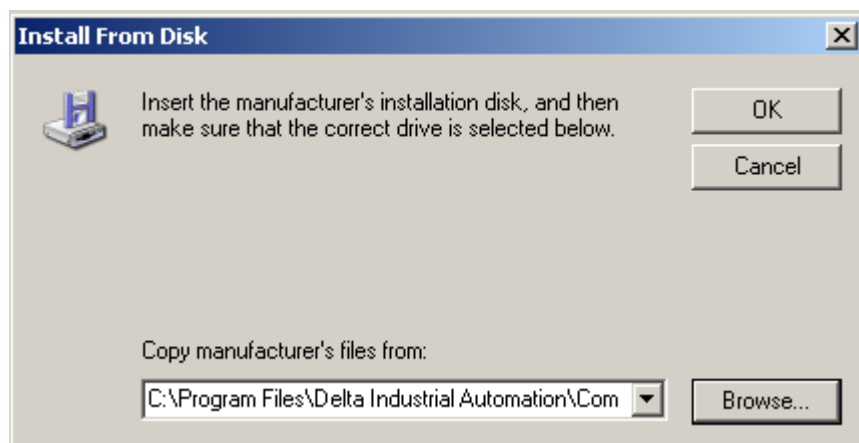
If the path for installation of Netview Builder is not the default one mentioned above, please find the driver program of IFD6503 along the path (NetView Builder 2.02\driver\)for installation of Netview Builder.



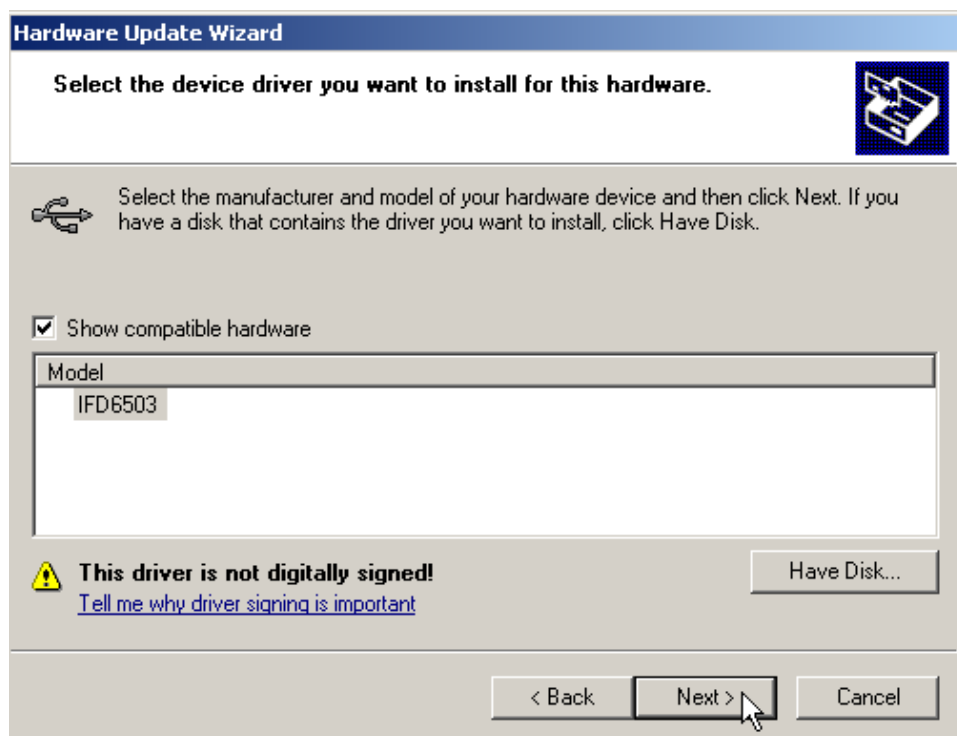
You should select 32 bits for the PC with 32-bit system and 64 bits for the PC with 64-bit system.



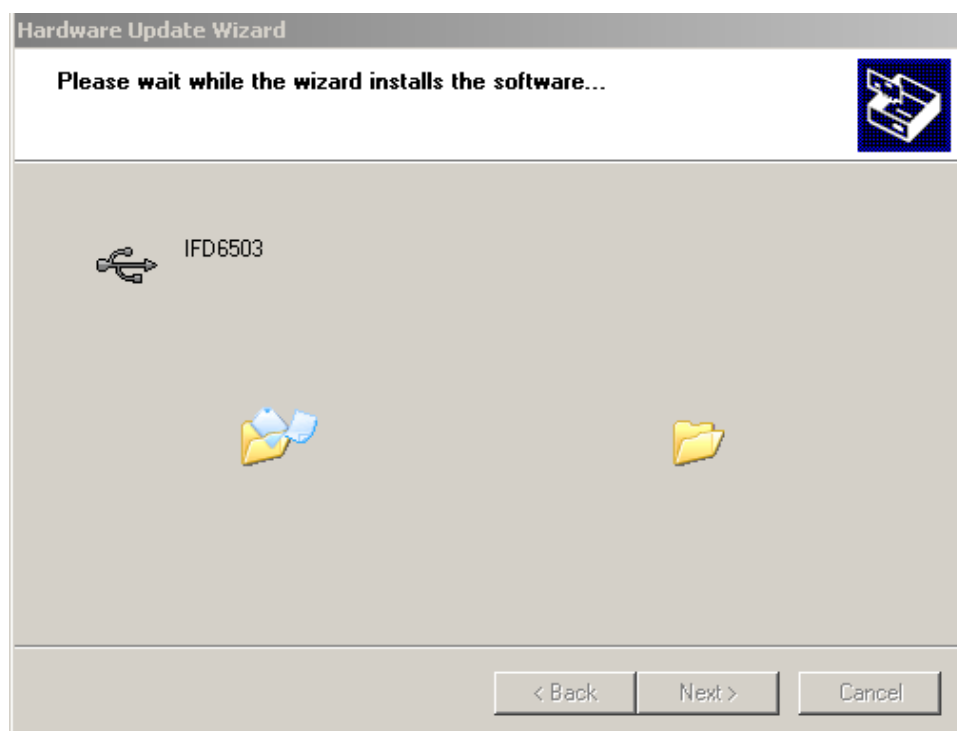
Click on “Open” after selecting the path is over.



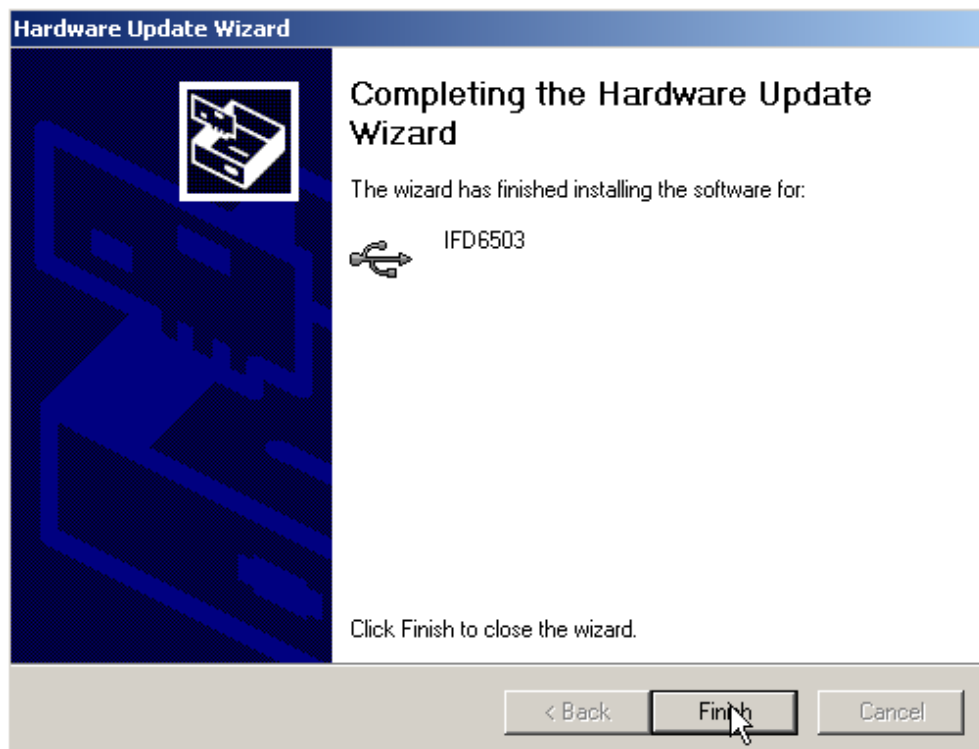
7. Afterwards, click on “OK” to return to “Hardware Update Wizard” interface. And click on “Next” button on the interface to install the driver.



The following interface appears promptly, which indicates the installation is in progress.



8. After the installation is completed, the following interface shows up finally, and click on “Finish” button.



9. PC will return to the “Computer Management” interface after the above step and then you will find that the IFD6503 icon appears as marked in red box under “Universal Serial Bus Controller” below, which means that PC has succeeded in installing the driver.

